


STAYING SAFE DURING LIGHTNING


v1.0-21/05/2020



A white geometric design in the top-left corner consisting of several overlapping triangles and lines, creating a star-like or abstract pattern.

Lightning can often strike with little to no warning, especially during the warmer months of the year. Lightning strikes that accompany thunderstorms pose a serious threat to people and safety.

With the outbreak of COVID-19, we often resort to using electronics such as laptops and mobile phones to distract ourselves. It's during these times, that we need to be extra mindful. Follow the simple guidelines below and learn how to protect you and your loved ones during lightning.

A white geometric design in the bottom-right corner, similar to the one in the top-left, consisting of overlapping triangles and lines.

HOW SHOULD I PROTECT MYSELF IF I'M INDOORS?



- While working from home on your laptop or attending an online meeting, pay attention to the weather, especially if a thunderstorm is brewing.
- Keep your laptop well charged before the thunderstorm intensifies. Use only the dongle or the wingle connected to the

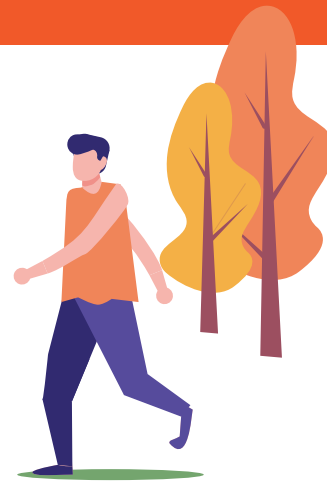
USB of your laptop for network connection.

- Do not use any electrical appliances during lightning - unplug them. Turn off air conditioners, computers, TV sets and other electrical and electronic appliances to protect them from power surges.

- Do not use corded telephones.
- Avoid having a shower.
- Stay away from metallic doors and windows.

WHAT IF I'M OUTDOORS WITH NO SHELTER IN SIGHT?

- If you have any metal objects with you, throw them away.
- Stay away from tall trees.
- Do not lie down. Squat on your toes to have minimum contact with the ground, place your hands over your ears and keep your head between your knees.
- Get out of the water if you're swimming, wading or even standing next to a puddle.
- If there is no shelter, crouch in the open to avoid being the tallest object around.
- Avoid open fields, elevated areas, isolated trees and communication towers.



WHAT EQUIPMENT ARE MOST VULNERABLE TO LIGHTNING?

Telecommunication equipment

Telephone systems and Fax machines.

Outdoor equipment

CCTV systems, burglar and fire alarms.

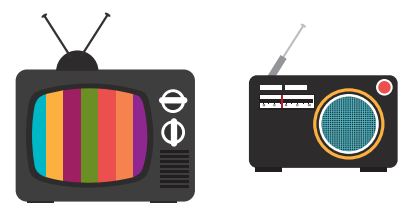
Household electronic appliances

Audio & Video equipment.

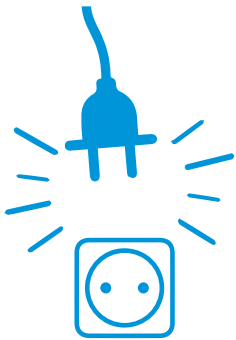
Computers & Data transmission equipment

Computers, Modems, Wingles, Switches and Routers.

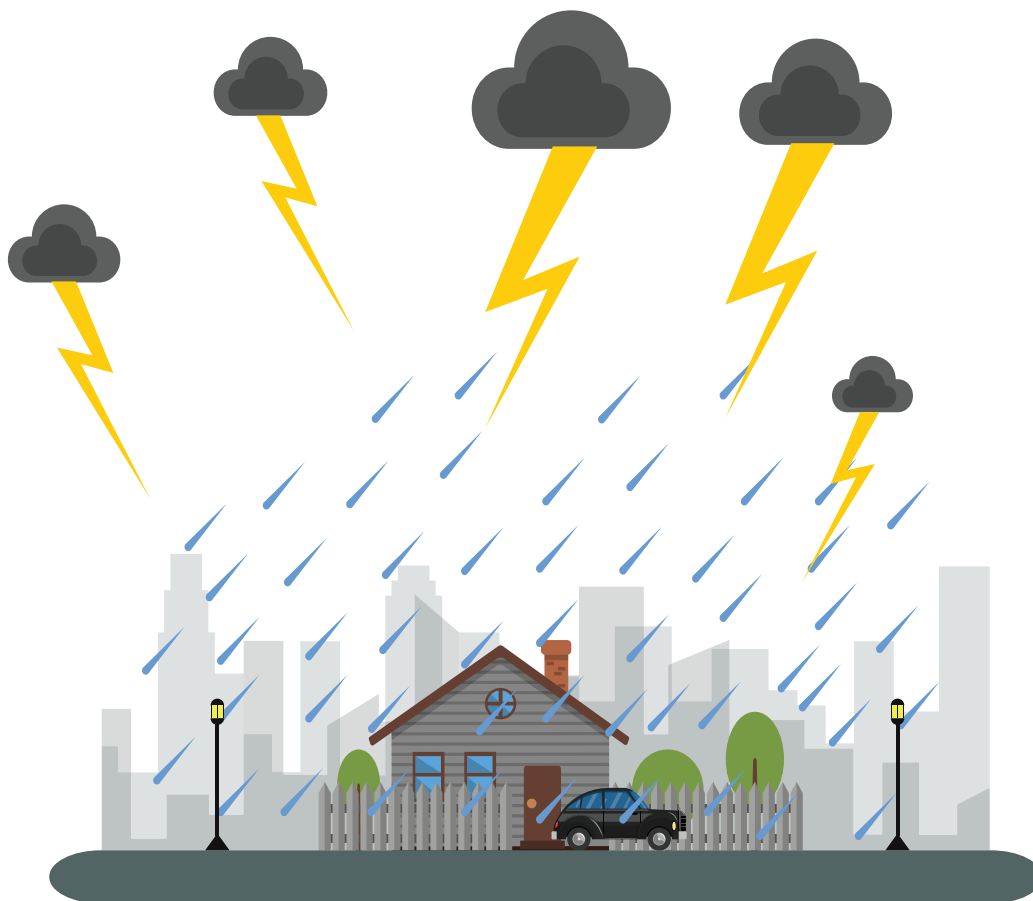
Electronic controls of machinery



HOW DO I PROTECT MY EQUIPMENT FROM LIGHTNING?



- Disconnect electronic home/office appliances from power sockets when there are signs of lightning. Follow the same before retiring to bed/leaving the office at the end of the day.
- If your building is a high-rise and looks exposed, install lightning arrestors to capture and safely conduct the energy of lightning to the ground.
- Bond together all incoming service lines in metal pipes, protective metal armour and connect them to a common earth.
- Place your equipment away from lightning conductors, antenna masts and power lines, as large currents flowing instantaneously can create destructive magnetic fields.
- Install surge protection devices to protect sensitive electronic equipment. Check your existing devices for proper functioning. Replace them if found faulty.
- Use fibre optic cables to protect computer and data transmission equipment from surges that might penetrate between buildings or lengthy links.



Fairfirst Insurance Limited

Hotline: 0112 428 428 | Website: www.fairfirst.lk